

Oven Profiling Software

ElcoMaster™ 2.0
data management software

ElcoMaster™ 2.0 is the fast, easy to use software solution designed specifically for the management of your oven temperature profile, storing results and generating professional inspection reports in seconds.



ElcoMaster™ 2.0 oven profile software has been designed to both provide meaningful information from raw temperature data provided by the Elcometer 215 Over Logger, and generate professional inspection reports in seconds.

ElcoMaster™ oven profiling software features include:

Elcometer 215 Gauge Set Up - Create and store unique oven profile setups, name each of the 6 channels, set sampling rates, number of batch runs, start/stop triggers and transfer them to the gauge.

Paint Parameters - Set up a library of individual paint types incorporating min, mid & max cure temperatures as well as the maximum absolute and minimum cross link temperatures.

Import Datasheets - Save a copy of the coating's data sheet as a permanent record.

Product Probe Maps - Simply drag and drop up to 6 probe ID markers on to your product photo or drawing to record exact probe placement for each production run.

Customisable Templates - Create your own comprehensive inspection profile - simply choose a relevant gauge setup, paint parameter and product probe map from your library and assign them to your logger data, providing instant, meaningful and professional reports.

Elcometer Cure Value - Using the industry accepted cure value calculation ElcoMaster™ provides instant Pass/Fail information by comparing the production run temperature to the coating supplier's cure requirements.

Graphical Reporting - Standard temperature profile graph, cure process and individual profile/cure graphs combined with the product probe map is available as standard.

Combined Reports - Fully customisable reports can be quickly generated - allowing oven profile reports to be combined with data from coating thickness, gloss & adhesion gauges - all at the click of a button.

Oven Profiling Software

Technical Specification

Oven Logger set up & programming

Paint/Powder parameter library

Product probe maps

Fully customisable inspection templates

Selectable probe/channel traces

Statistical analysis by probe/channel
Max, Min, σ , COV

Temperature profile, cure progress, histogram &
individual cure value graphs against product

Time at temperature, time of peak difference

Time above maximum absolute & minimum
cross link temperatures

Fully customisable inspection reports

Combined reports - coating thickness, gloss, adhesion,
profile, climate, surface cleanliness

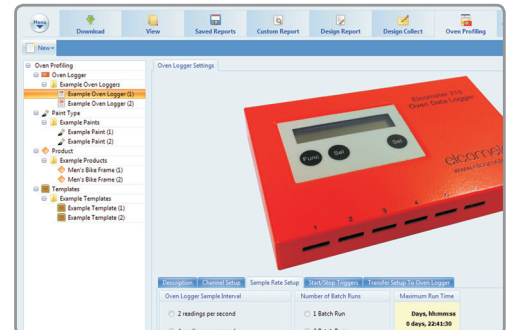
Report generator wizard & PDF generator

Email or export data

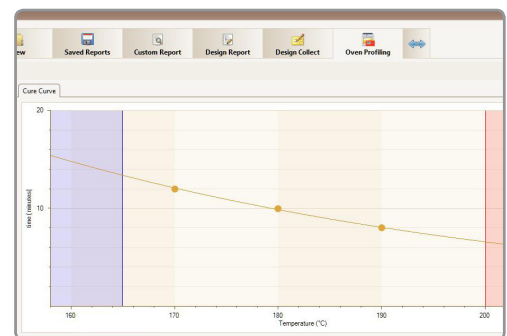
Import photo's, data sheets, critical data, inspection
notes, etc & include on inspection reports

Cloud computing - allows for cross site collaboration,
including internal text messaging tool

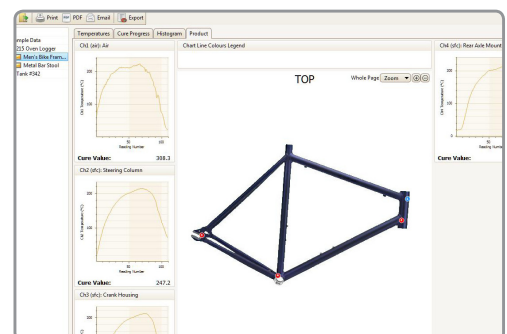
ElcoMaster™ 2.0
data management software



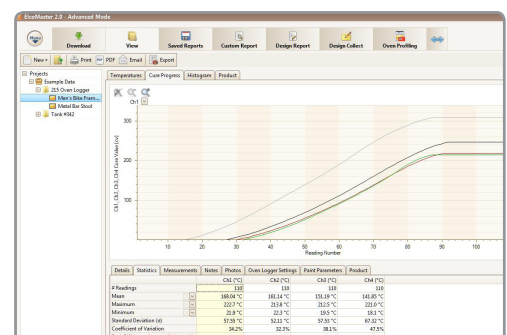
Create and store unique oven profile setups and transfer them to the gauge.



Set up a library of individual paint parameters.



Individual product probe maps record the exact probe placement for each component.



Standard temperature profile and cure process graphs can be viewed at any time.